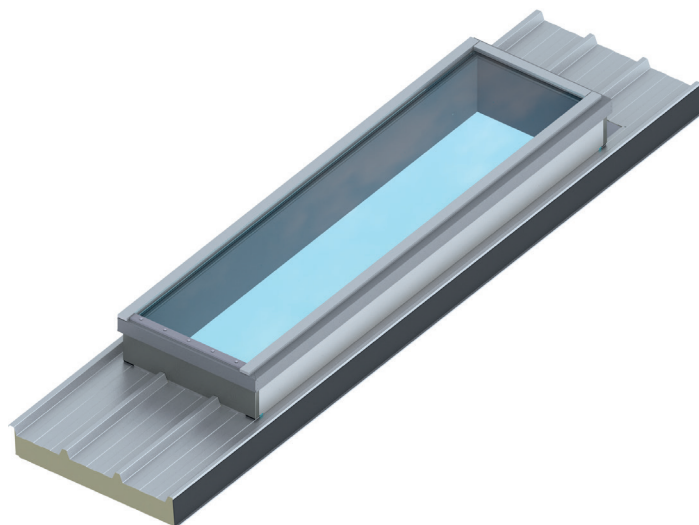


## ADJUSTMENT BASE (FIXED GLAZING OR SKYLIGHT)

The incidence of light plays a decisive role in the design of roofs. Skylight domes or skylights must not only act as a source of light and heat protection, but also as a roof exit and smoke and heat extraction system. We offer the perfect solution with the new generation of our adjustment base.

The particularly slim frame structure and integrated fixed safety glazing create a pleasant daylight atmosphere in rooms and at the same time provide a clear view of the sky. This innovation is suitable for flat pitched roofs in the range from 3.4° to 10°. The adjustment base is not only characterised by its easy handling, but also by its outstanding technical properties:

- Maximum daylight incidence and view
- High-quality glass product with clamping system
- Weather-resistant outer pane made of strengthened single-pane safety glass
- Available as double or triple insulating glass
- Breakthrough-proof glass with hail resistance and sound insulation:  $R_w = \text{approx. } 41 \text{ dB}$
- Various glazing variants with different insulating properties and UV resistance
- Glass sizes up to 700 x 3000 mm



The technical data speaks for itself: The upstands can be installed in all our MONTANATHERM® roof panels (MTD TL 85 - 185). The prefabricated elements enable effortless installation on the roof. This also makes it easy to install roof windows from system window profiles. The new generation of the adjustment base combines aesthetics, functionality and technology in an impressive way.

### COLORS

The colors of the outer skin are according to the exterior and interior colors of the respective colors of the ordered MONTANATHERM® roof panel (the field of liquid plastic is excluded).

### STATIC

The span table for MONTANATHERM® roof panels is definitive. The width between supports needs to be adjusted on loads of  $> 1.0 \text{ kN/m}^2$ . If possible the adjustment opening should be installed flush with the stringers. The adjustment base should not be subject to any additional stress during the construction period and the openings must be secured according to SUVA guidelines!

### TECHNICAL SPECIFICATIONS

Panel length max. 10000 mm. The position of the adjustment base with fixed glazing can only be selected lengthwise to the roof panel (max. 3000 mm). The adjustment base can not be positioned crosswise from the roof pane. The distance between the stringers are according to our span table and the respective profile type. The stringers are continuous in the light areas due to static reasons if the light measurement is longer than 2.50 m.

We will be happy to assist you with the planning and realisation of your fixed glazing.